

Clovelly, NSW

3/7 Flood Street

ellouise
tyrrell

PROPERTY MANAGEMENT
STRATA MANAGEMENT

APPLICATION AND DEPOSIT RECEIVED!

Designer Finished | North East aspect | Private heated pool! Privately set back from the street, this stunning two-level townhouse showcases the ultimate in idyllic indoor-outdoor living and designer beach house style. Filled with sunshine and natural light, it has a spacious open-plan living zone flowing seamlessly to a landscaped courtyard with a gas heated 9.6 metre lap pool and a perfect north-east aspect.

Superbly appointed throughout, it has a spacious Caesarstone kitchen with a breakfast bench, plenty of storage and premium quality appliances. Upstairs are the main bedroom with a chic ensuite, second double bedroom (opening to a north-facing terrace), main bathroom, concealed laundry and linen cupboard.

One of four strata residences in a secure garden complex, the townhouse has its own gated entrance as well as direct internal access from a garage in the secure basement parking area. Also on title is another

\$1,250 pw

Bedrooms: 2

Bathrooms: 2

Carspaces: 2

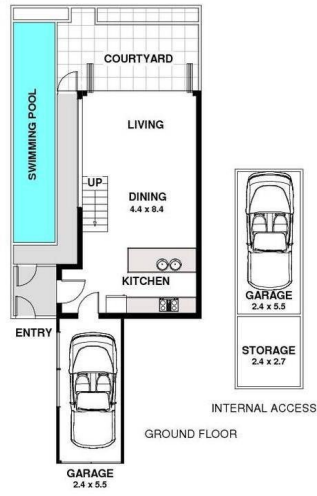
Contact:

Type: Townhouse

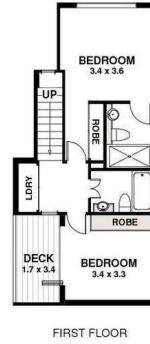
Date Available: 15/05/2019

Bond: \$5000

<https://www.etpm.com.au>



Townhouse 3
7 Flood Street
CLOVELLY



PLAN FOR PROMOTIONAL PURPOSES.
LAYOUT DIMENSIONS ARE APPROX.
NO LIABILITY WILL BE ACCEPTED.

Plans shown are only indicative of layout. Dimensions are approximate.

Clovelly, NSW
3/7 Flood Street