

Potts Point, NSW

5/12-16 Challis Avenue

**ellouise
tyrrell**

PROPERTY MANAGEMENT
STRATA MANAGEMENT

A Masterpiece of Luxury and Light in a Highly Sought-after Locale

Located on one of Potts Point's most popular streets, this Tonkin Zulaikha Greer building is designed to maximise views, cross ventilation and privacy. The double height ceilings in the living and terrace areas give the apartment another dimension allowing the industrial doors to open to full height and create a spectacular indoor/outdoor alfresco entertaining space. The mezzanine level upstairs contains two bedrooms, both with ensuites and balconies, the master with fabulous vistas of Challis Ave streetscape and the city's CBD. Flooded with natural light, the apartment has been newly refurbished to create a modern masterpiece of

\$1,300 pw

Bedrooms: 2

Bathrooms: 2.5

Contact:

Type: Unit

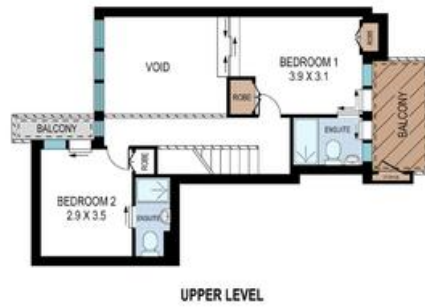
Date Available: 22/12/2016

Leased Date: 16/01/2017

Bond: \$5200

<https://www.etpm.com.au>

5/12-16 Challis Avenue
POTTS POINT



96sqm Internal Space
23sqm External Space

FLOOR PLAN BY BOKTEX PTY LTD PH 0414 622 871
DIMENSIONS ARE APPROXIMATE FOR GENERAL INFORMATION ONLY

Plans shown are only indicative of layout. Dimensions are approximate.

Potts Point, NSW
5/12-16 Challis Avenue